

**LEGEND**

- Roads
- Bike Lane
- Bike Route
- Bus Service
- Existing Trail
- Future Trail
- Mountain Trail
- Trailhead
- Retail & Dining
- Parks
- Peoria City Boundaries
- Dog Park

Trim off this strip after folding at marks



### CALDERWOOD BUTTE TRAIL

The trailhead for Calderwood Butte is at 99th Avenue, north of Jomax Road. Services include: off-street parking. The entire loop trail is 1.6 miles in length. The trail is open from dawn to dusk.

Please avoid parking in the adjacent neighborhoods to access the trail.

### WESTWING MOUNTAIN TRAIL

The trailhead for Sunrise Mountain is at Westwing Park, 27100 N. Westwing Parkway. Services include: off-street parking, restrooms, and chilled drinking water. The entire loop trail is 3.1 miles in length.

The park is open from 6:00 a.m. to 10:30 p.m.; the trail is open from dawn to dusk.

Please avoid parking in the adjacent neighborhoods to access the trail.

### SUNRISE MOUNTAIN TRAIL

The trailhead for Sunrise Mountain is also at Westwing Park. Services include: off-street parking, restrooms, and chilled drinking water. The entire loop trail is 4.5 miles in length, and there are several shorter trail loops.

The park is open from 6:00 a.m. to 10:30 p.m.; the trail is open from dawn to dusk.

Please avoid parking in the adjacent neighborhoods to access the trail.

### EASTWING MOUNTAIN TRAIL

The trailhead for East Wing Mountain is at Sonoran Mountain Ranch Park, 7098 W. Miner Trail. Services include: off-street parking, restrooms, and chilled drinking water. The entire loop trail is 1.5 miles in length.

The park is open from 6:00 a.m. to 10:30 p.m.; the trail is open from dawn to dusk.

Please avoid parking in the adjacent neighborhoods to access the trail.

### NEW RIVER TRAIL

The New River Trail is designed to accommodate all non-vehicular users, including walkers, joggers, strollers, bicyclists and equestrians. The current length is 12.5 miles from Bethany Home Road to Williams Road. The system aligns some of the City's local shopping, dining and entertainment venues making it a fun way to reach your destination. A connection with the Grand Canal Trail in Glendale is planned.

### SKUNK CREEK TRAIL

The Skunk Creek Trail is designed to accommodate all non-vehicular users, including walkers, joggers, strollers, bicyclists and equestrians. The current length is 5.7 miles from 83rd Avenue to 51st Avenue.

The trailhead for Skunk Creek is on 83rd Avenue, north of Greenway Road. Services include: off-street equestrian trailer parking, troughs, and chilled drinking water.

### ARIZONA CANAL TRAIL

The ACDC is designed to allow all non-vehicular users, including walkers, joggers, strollers, bicyclists and equestrians. The current length is 26 miles from 75th Avenue to Hayden Road. The system aligns with the Skunk Creek Trail, Cave Creek Wash Trail, Crosscut Canal Path, and the Indian Bend Wash Trail. Visit [geo.azmag.gov/maps/bikemap/](http://geo.azmag.gov/maps/bikemap/) for more information.



1



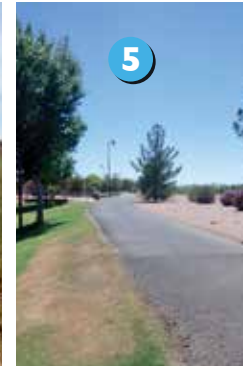
2



3



4



5



6



7

#### SHARE THE TRAIL



- Hikers, runners, and bikers should always yield to horses.
- Bikers should yield to hikers and runners
- Downhill traffic should yield to uphill traffic.
- When passing, a friendly greeting is encouraged to let others know you are coming.

## PEORIA AREA POINTS OF INTEREST

### Community Services

623.773.7137

### Park Ranger

623.764.0407

### Rio Vista Rec Center

623.773.8600

Visit us online at [peoriaaz.gov/trails](http://peoriaaz.gov/trails)

### LAKE PLEASANT

Peoria has Arizona's second largest lake in central Arizona. Lake Pleasant offers catch-and-keep fishing, boating with a total of 14 boat ramps, canoeing and kayaking, hiking, camping and picnicking. The park also contains an RV dump station, restaurants, and a new Discovery Center opening in Summer, 2016. The park is open from 6:00 a.m. to 10:00 p.m.

### PARKS AND RECREATION

The City of Peoria has 35 neighborhood parks with varying amenities including play equipment, basketball, volleyball, or tennis courts, open fields, off-street parking, and chilled drinking water. Parks are open daily from 6:00 a.m. to 10:30 p.m. Sunnyslope Park, Parkridge Park, Alta Vista Park, and Scotland Yard Park include dog-friendly areas for off-lease play.

### COMMUNITY PARKS

**Rio Vista Community Park**  
Amenities include ball and multipurpose fields, an urban lake, picnic ramadas, sand volleyball, play equipment, skate park, splash pad, the Veterans Memorial Wall, and a rec center.

**Pioneer Community Park**  
Amenities include ball and multipurpose fields, an urban lake, picnic ramadas, play equipment, splash pad, dog friendly area and the Heritage Garden.

### RETAIL AND DINING

Peoria has some of the best retail shopping and dining experiences, including North Peoria, at Lake Pleasant Parkway and Happy Valley Road; P83 Entertainment District, at 83rd Avenue and Paradise Lane; Park West, at 99th Avenue and Northern Avenue; and several other strategically-located commercial centers throughout the city. For more information and store listings, visit [www.visitpeoriaaz.com](http://www.visitpeoriaaz.com) and [www.p83az.com](http://www.p83az.com)

### ARTS AND CULTURE

Peoria has two public libraries, the Peoria Main Library, at 8463 W. Monroe Street, and the Sunrise Mountain Library, at 21109 N. 98th Avenue.

The City also has two performing arts venues, Arizona Broadway Theater, at 7701 W. Paradise Lane, and The Peoria Center for the Performing Arts, at 8355 West Peoria Avenue, and the Peoria Art Gallery at 8401 W. Monroe Street.

### VALLEY METRO BUS SERVICE

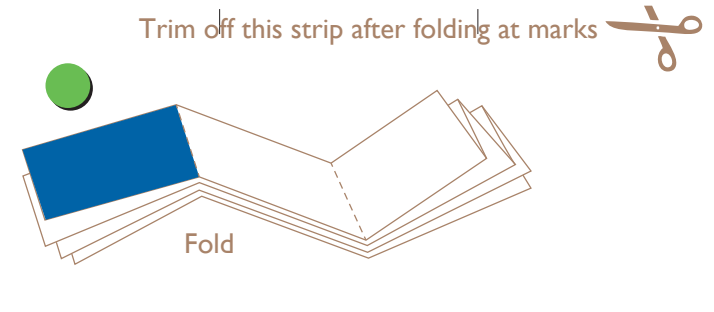
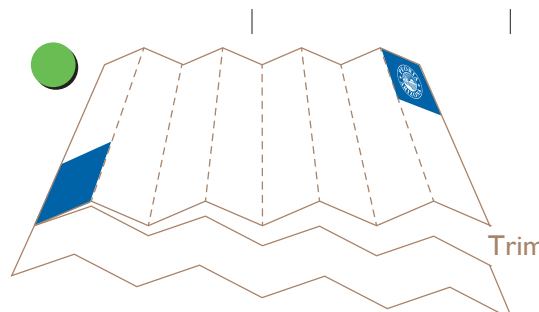
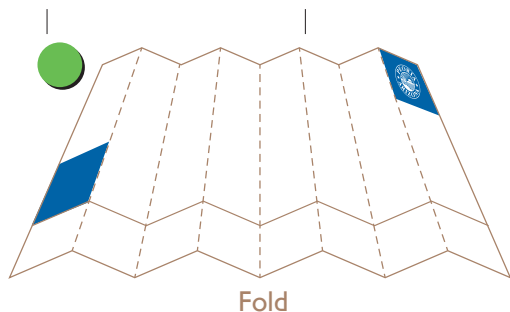
Peoria contains several local bus, express, and limited routes. The bus system aligns along some of the City's local shopping, dining, and entertainment venues.

**Routes include:**  
186 - Union Hills Drive  
170 - Bell Road  
138 - Thunderbird Road  
106 - Peoria Avenue  
67 - 67th Avenue  
Grand Avenue Limited

Visit [www.valleymetro.org](http://www.valleymetro.org) for more information.

### DIAL-A-RIDE & ADA SERVICE

Reservations are required and will be accepted not later than 5:00 p.m. one business day before the ride date by calling 623.773.7435. ADA trips must be reserved between one and fourteen days in advance. Service available Monday – Friday. Peoria Dial-A-Ride was formed in 1989 to provide basic transit services for the residents of Peoria, now servicing over 30,000 transports yearly.



Trim off this strip after folding at marks

